

17-0180

1

2

3

4

5

6

7

8

9

a)

am stes ---

pizz. arco

am breit breit

am stes ---

ppp

sf > ppp

pp

f mf >

pp >

p >

pp

pp

ppp

(CES - C - H)

b)

pp

mf

pp

p

pp

pp

pp

pp

am stes ---

Webern, Opus 11/I

Musical score for Webern, Opus 11/I, measures 1-10. The score is written in 6/8 time and consists of three staves: a top staff in bass clef, a middle staff in treble clef, and a bottom staff in bass clef. The key signature is one sharp (F#). The score is divided into ten measures, numbered 1 through 10. Measure 3 contains a triplet of eighth notes. Measure 4 contains a triplet of sixteenth notes. Measure 5 contains a dotted quarter note. Measure 6 contains a quarter note. Measure 7 contains a quarter note. Measure 8 contains a quarter note. Measure 9 contains a quarter note. Measure 10 contains a quarter note. The score is written in a compact, minimalist style characteristic of Webern's Opus 11.

6-239

6-217

Hexachord boundary 6-210/39 ~~6-217/43~~ 6-219/44

Webern, Opus 11/I

Handwritten musical score for Webern, Opus 11/I, featuring hexachord boundary annotations. The score is written in 6/8 time and consists of three staves: Bass, Treble, and Bass. The music is divided into ten measures, numbered 1 through 10. The annotations include:

- Red circles highlighting specific notes and chords.
- Green circles highlighting other notes and chords.
- Blue circles highlighting notes and chords.
- Numbered annotations (1, 2, 3, 4, 5, 6, 7, 8, 9) placed above the notes.
- Small asterisks (\*) placed below the staff in measures 4, 5, and 6.

6-219/44

Op. 11/1

Vc 6

Pno

6-219: [6,7,10,11,1,2]

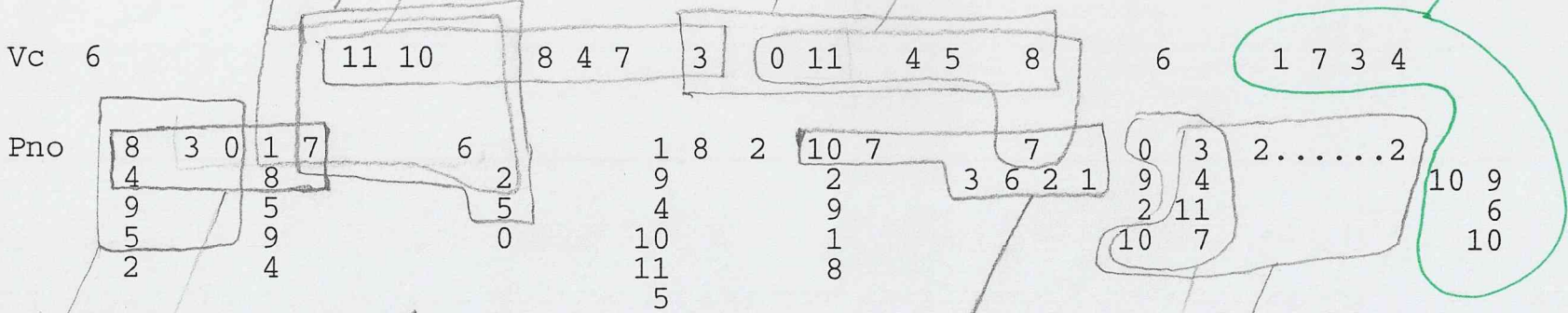
6-244: [5,6,7,10,11,2]

6-219: [3,4,7,8,10,11]

6-244: [8,11,0,3,4,5]

6-219: [4,5,7,8,11,0]

7-31 III



6-244: [3,4,5,8,9,0]  
 6-219: [0,1,3,4,7,5]  
 ? 6-219: [6,9,0,1,3,4]

↑  
 ? 6-244: [10,11,2,5,6,7]

6-244: [1,2,3,6,7,10]  
 also in bass  
 begins with  
 low Eb!  
 ↓  
 3-6-2-1-10-7

6-244: [7,10,11,1,3,4]  
 6-244: [10,11,0,3,4,?]  
 EXCHANG  
 (occluded)

N.B. Even Distrib.

PC	count
0	4
1	4
2	5
3	5
4	7
5	5
6	5
7	6
8	6
9	6
10	5
11	4

6-217/43

Op. 11/1

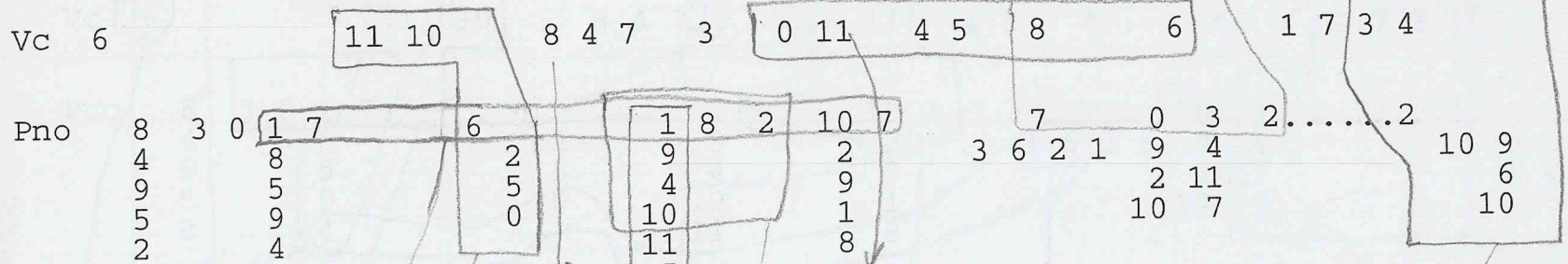
Vc 6

Pno

also formed with piano bass  
See down arrow

6-217:  
[4,5,6,8,11,0]

6-243:  
[0,2,3,6,7,8]



6-217:  
[10,11,0,2,5,6]

6-217:  
[9,10,11,1,4,5]

6-243:  
[8,9,10,1,2,4]

6-217:  
[2,3,4,6,9,10]

6-217:  
[6,7,8,10,11,2]

6-210/39

Op. 11/1

Vc [6]

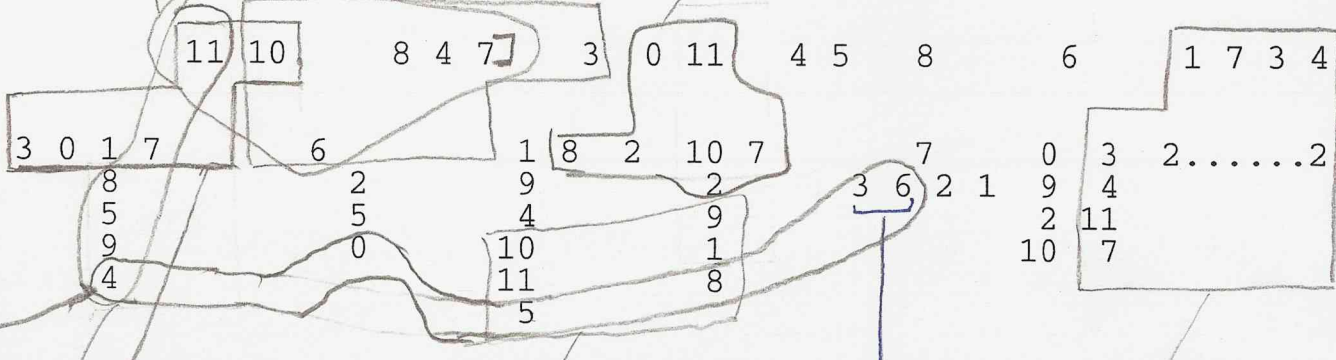
Pno

6-210: [4,6,7,8,10,11]

6-210: [4,5,7,8,9,11]

6-210: [3,4,6,7,8,10]

6-210: [7,8,10,11,0,2]



6-210: [2,4,5,6,8,9]

6-239: [7,10,11,0,1,3]

6-239: [5,8,9,10,11,1]

6-239: [11,1,2,3,4,7]

bass begins w/cello F#

6-239: [0,3,4,5,6,8]

beginning 6-244!

[1,2,3,6,7,10]

Andante  
Motum

ics [2] [5]

pno vc pno vc

"pno" [2] [3] [6] [9]

pno vc vc pno

tr bass [2] [8]

tr bass tr bass

trump [7]

trump trump

Vc lines - Some features

"Serial" median  
↓

Apex  
#0

\* Repeated pitches  
E and G

Handwritten musical notation for a violin line. The staff shows a sequence of notes with various accidentals and dynamics. Above the staff, there are circled numbers: +41, -25, -14, +8, +3, +8, -3, -13, +17, -11, +15, +22, and -41. Below the staff, there are circled numbers: 6, 11, 10, 8, 4, 7, 3, 0, 11, 4, 5, 8, 6, 1, 7, 3, 4. A bracket groups the last seven notes (6-11) with the label "5-10 CIII". To the right, there are notes for "hope 2" (D) and "hope 9" (A).

"Closed up" (d. w/ med) - pc

Handwritten musical notation for a "Closed up" section. The staff shows a sequence of notes with various accidentals. Above the staff, there are circled numbers: 6-244 and 5-10. Below the staff, there are circled numbers: 6-210 and 6-217. A bracket groups the last seven notes (6-11) with the label "5-10 CIII". To the right, there is a diagram showing a sequence of notes in a box, with a circled note and an arrow pointing to it.

Ascending modal  
7 pitches

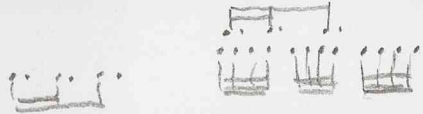
total pitch space = 4 bars

Handwritten musical notation for an ascending modal section. The staff shows a sequence of notes with various accidentals. Above the staff, there are numbers: 2, 3, 2, 3, 1, 1, 2, 3, 1, 4, 11, 7. Below the staff, there are numbers: 1, 2, 3, 4, 5, 6, 7, 8, 9, 10, 11, 12, 13, 14, 15. Annotations include "submed." with an arrow pointing to note 4, "median" with an arrow pointing to note 8, and "submedi." with an arrow pointing to note 12. A note "7" is written below note 16. To the right, there are notes for "hope 2" (D) and "hope 9" (A).

Two empty handwritten musical staves, one for the treble clef and one for the bass clef.



Piano - upper voice w/ cells



Handwritten musical notation for piano upper voice with notes and accidentals.

Blank musical staves for piano upper and lower voices.

Composite VC Piano (dialogue format) stemmed notes are single tone vertical stems are simultaneous

Handwritten musical notation for composite VC piano with notes and accidentals.

Total Pitch Tableau (array)

Handwritten musical notation for total pitch tableau with notes and accidentals.



17-012

5

8

Handwritten musical score for guitar, consisting of two staves. The top staff is in treble clef and the bottom staff is in bass clef. The music is written in a key with one sharp (F#) and a time signature of 2/2. The score includes various chords and melodic lines, with some notes marked with accidentals and stems. There are two boxed numbers, 5 and 8, above the staff. The piece ends with a double bar line.

Webern, Opus 11/I

1 2 3 4 5 6 7 8 9 10

Handwritten annotation: opex

6-23124

Webern, Opus 11/I

Handwritten musical score for Webern, Opus 11/I, measures 1-10. The score is written on three staves: a bass staff at the top, a treble staff in the middle, and a bass staff at the bottom. The music is in 6/8 time and features complex rhythmic patterns and chromaticism. The score is divided into ten measures, numbered 1 through 10. Measure 1 is marked with a '1' at the beginning of the bass staff. Measures 2 through 10 are marked with numbers 2 through 10 at the top of the staff. The notation includes various note values, rests, and accidentals. There are several slurs and phrasing marks above the notes. The score is written in black ink on a white background.

Schoenberg Ciphers  
(and Webern)

— "ordered" only?

Webern, Opus 11/I

Möppige ♩ (cast)

(s)  
 A D E♯ C H B E G As/Gis Cis/Des  
 Pes: 9 2  $\sqrt{3}$  0 11 10 4 7 8 1  
 (8-14) 1 (C#)

As = <sup>As</sup> Arnold Schönberg  
 Des = <sup>Des</sup> Arnold Schönberg

Excludes: F(?) Fis/Ges (= Gerstl)

Mathilda 9 11 2 4

or Schöpfung

Webern A E B<sup>b</sup> (last 3 notes)

Hex Subset 1 8-4:

6-217

6-239

6-244 (24)

TRITONE IMAGES:

A D E♯ C H B E G  
 T6: E♯ (A) A B♯ F E B Cis  
 3 8 9 6 5 4 10 1

Invert 4-9: [3,4,9,10]