

# II.

Lebhaft und zart bewegt (♩=ca 100) drängend - - - poco rit. - - -

kl. Fl. *staccato*

Ob. *cl* *espress.* *ppp*

Kl. in Es *dolce* *pp* *espr. - Va* *pp*

Kl. in B *pp* *molto espr.*

Hr. in F *cl*

m. Dpf. *Flatters.* *pp*

frp. in B *tr* *espress.* *p*

m. Dpf. *p*

Pos. *p*

m. Dpf.

Harmon.

Cel.

Hrf.

Glsp.

Beck.  $\frac{3}{4}$

Trgl.  $\frac{3}{4}$

Lebhaft und zart bewegt (♩=ca 100) drängend - - - poco rit. - - -

Solo - Gg. *dolce* *Vn* *p* *Dämpfer auf* *pp* *pp* *9*

o. Dpf. *pp*

Solo - Br. *espress.* *Vc* *p*

m. Dpf. *pp*

Solo - Vlc. *p*

m. Dpf.

Solo - Kb. *p*

m. Dpf.

4

9

(♩=80) - - - - tempo      zögernd      tempo      Flatters.      nimmt kl. F3te

kl. Fl.      nimmt gr. F3te      pp      RT. F3te      pp

Ob.

Kl. in Es

Kl. in B      pp      *espress.*      pp

Hr. in F  
m. Dpf.

Trp. in B  
m. Dpf.

Pos.  
m. Dpf.      *wie ein Hauch*      *ppp*      *ppp*

Harmon.

Col.      *deutlich*      *pp*      *pp*

Hrf.

Glsp.

Beck.

Trgl.      *ppp*      *ppp*      *ppp*

(*fanny*)  
Solo - Gg.  
m. Dpf.      (♩=80) - - - - tempo      *espress.*      *zögernd*      tempo      *v*

Solo - Br.  
m. Dpf.      *am Stg.*      *ppp*      *ppp*      *ppp*

Solo - Vlc.  
m. Dpf.      *ppp*      *ppp*      *ppp*      *p*

Solo - Kb.  
m. Dpf.      *ppp*      *ppp*      *ppp*



10 *accel.* - - - - *rasch* (♩ = ca 144) 5

kl. Fl.

Ob.

Kl. in Es

Kl. in B

Hr. in F  
m. Dpf.

Trp. in B  
m. Dpf.

Pos.  
m. Dpf.

Harmon.

Cel.

Hrf.

Clsp.

Beck.

Trgl.

*mit Schwammeschlägel*

*accel.* - - - - *rasch* (♩ = ca 144)

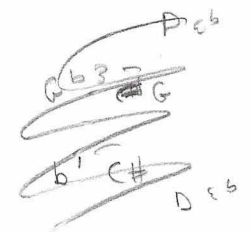
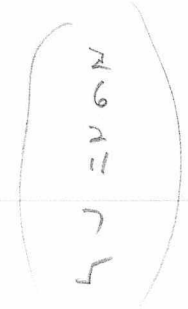
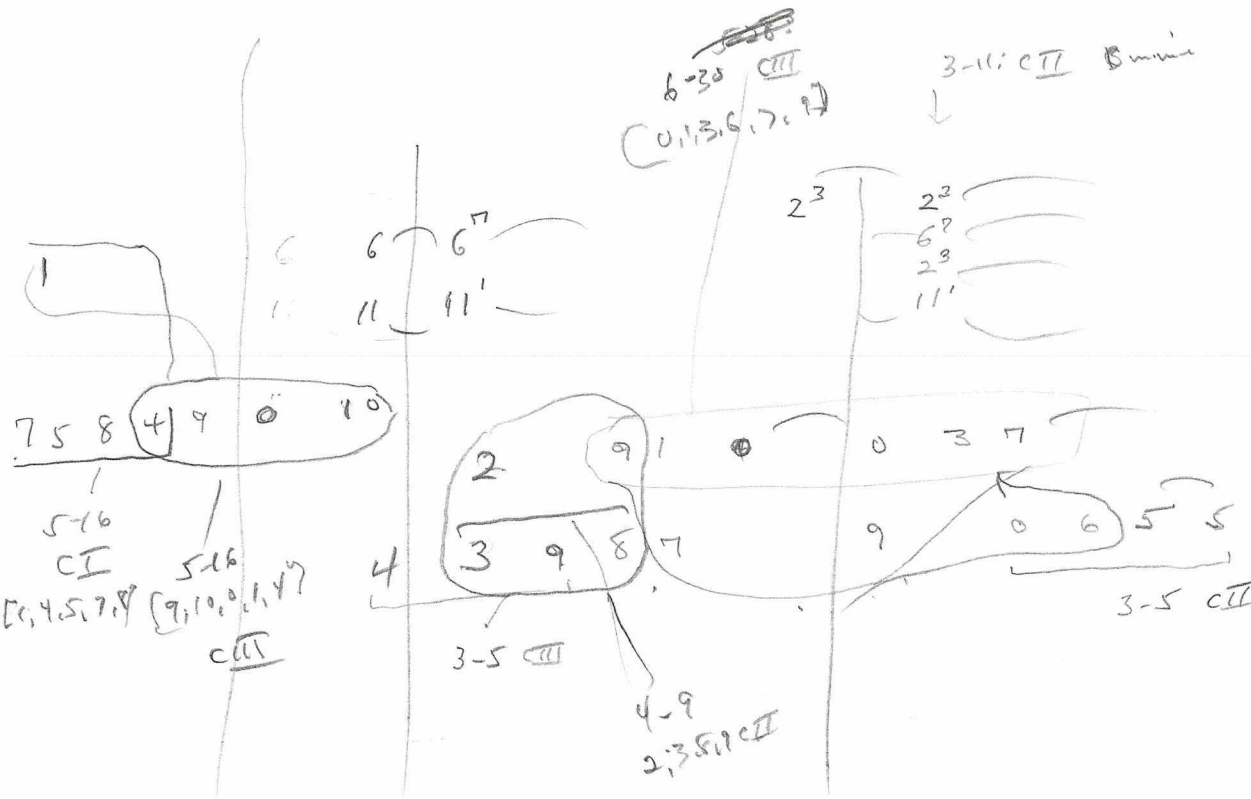
Solo - Gg.  
m. Dpf.

Solo - Br.  
m. Dpf.

Solo - Vle.  
m. Dpf.

Solo - Kb.  
m. Dpf.

cl. Es  
2. kl. B



4-18;  
 11, 2, 5, 6  
 4-27  
 11, 2, 5, 7  
 2<sup>3</sup>  
 6<sup>7</sup>  
 11<sup>1</sup>  
 2<sup>3</sup>

Op. 6

8

mention muted Harp chud bar 10

Op. 6

Op. 10

Am Str

Va

Bn

Flauto

Va

Vn

Vc

Cb

Harm

Vibrato

ppp

ppp

Cel

Tpt

Tbn

Vc

Colleges

Hn

Harp

Tbn

Harp

Harm.

ppp

ppp

1

2

3

4

5

Handwritten musical notation for the first system, consisting of three staves. The top staff is in treble clef, the middle in bass clef, and the bottom in bass clef. It contains various notes, rests, and accidentals (sharps, flats, naturals).

Handwritten musical notation for the second system, consisting of three staves. It includes a double bar line in the first measure of the top staff. The notation continues with notes and accidentals across the staves.

Two empty musical staves at the bottom of the page.