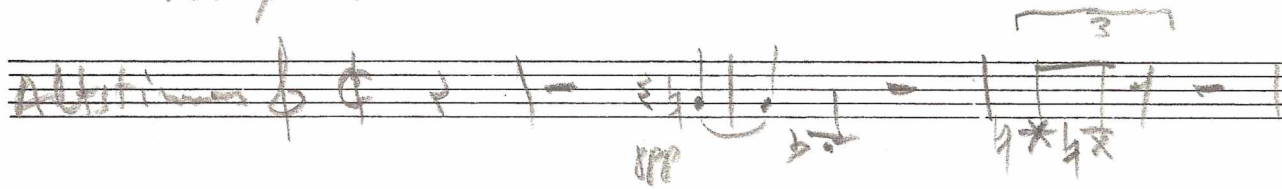


MF101:03K3

beginning of vocal part of "second movement" of Op. 9 - setting of  
"Schmerz immer  $\frac{1}{2}$  lück nach oben" [perf. with, in script  
mutter]

Langsam



Schmerz — immer

Op. 10/5 sketch - part (B) lower half of page

Handwritten musical score for the first system. The staves include:  
 - Top staff: Trompets (Trumpets)  
 - Second staff: Br (Trumpet), Tr (Trumpet), Trompets  
 - Third staff: Vcl. (Violin), tr (Trumpet), Cesta (Celesta)  
 - Fourth staff: Vcl. (Violin), B.Kl. (Bassoon), Horn, C.B. (Cymbal)  
 - Fifth staff: Horn  
 - Sixth staff: Horn, Oboc (Oboe), Fagott (Bassoon)  
 Annotations include 'am Steg', 'tr', 'tr(h)', 'C.B.', and circled notes.

Handwritten musical score for the second system. The staves include:  
 - Top staff: Fagott (Bassoon), Trompets (Trumpets)  
 - Second staff: Br. (Trumpet), Vcl. (Violin), Koboc (Bassoon), tr (Trumpet)  
 - Third staff: Vcl. (Violin), tr (Trumpet), Violin, Trompets, Horn, C.B. (Cymbal)  
 - Fourth staff: Cesta (Celesta), Horn, C.B. (Cymbal)  
 - Fifth staff: Horn  
 - Sixth staff: Horn  
 - Seventh staff: Horn  
 - Eighth staff: Horn  
 - Ninth staff: Horn  
 - Tenth staff: Horn  
 Annotations include 'Fagott', 'Br.', 'Vcl.', 'Koboc', 'tr', 'Violin', 'Trompets', 'Cesta', 'Horn', 'C.B.', and circled notes.

① i.e. d<sup>b1</sup>-c<sup>1</sup>

② Not really legible

③ Not in op. 10

This directly below E<sup>2</sup> in part A

Klar. (B)

1. Horn (F)

mit Dämpfer  
tr(b)  
ppp

(pencil) \*

1. Tromp (B)

cis

ppp

[illeg.]

gilt

(not clear)

Mandoline

Harfe

87 →  
Celesta

Solo-Geige

mit Dämpfer  
am Steg

5

gilt

\*perhaps

*All piano*

A: 2 STAVES

B: 12 STAVES

C: 12 STAVES

WEBER! &

George Lieder, Op. 3 MF101: 0092

1907  
1882  
2

Question of date (first stud work of Viennese School?)

Published ~~1907~~ in 1921! ask Ann Sheffler

~~dubious~~ - see Molden

MF101-0128 Earlier version of "Acht ist ein Wind"

interesting for segmentation: ~~phrasing~~ same, but rhythm of vocal line is very square: ♩ values only, no triplets

Sketches on extra staves below bar 7 and at bottom right (second version) (thus, this is earlier)

MF101-0130 Earlier version of "Im Windsweben"  
again, with sketches for final version

err

Opus 4  
Was originally to have been Op. 6 ~~?~~ (?)

MF101:0191 Op. 5 & Op. 7 sketches - see transcription on sep. page in notation

\* All Webern materials are

- on
- 101
- 102
- 103
- 104



Weber, contd.

MF101-0343

Fair copy of op. 9/1 with circled **I**

poem by  
Weber

Lower half of page: beginning of setting of "Schwarzmann" with Sprechstimme — see notation — marked **II**.

N.B.

MF101-0344-0345

continues the song, with crossouts, etc. — essentially a corrected draft with sketch ossia

MF101:0346

Draft of op. 9/6 with  $\frac{3}{8}$  instead of  $\frac{3}{4}$  meter

MF101:0348

Tell Mr. Meyer: Description incorrect. Must be sketch for end of op. 9/3, not "sketch for Regatta No. 6"

— only  $\frac{4}{4}$  is missing from pc constellation



Waltman, Op. 10

Zanard: where are the sketches for the first version  
in the Morgan library? (whereabouts unknown, according  
to Ann Shreffler)



See orig.

MF101:0354

~~op. 10~~ sketch for end of Op. 10/4  
originally classified by Moldenhauer  
with 4 posthumous reh. pieces — which suggests  
that the fragments on MF102:0708 etc. may be of interest

This orig.!

See orig.

MF101: ~~0354~~ 0357

Supposed to be sketches for Op. 10/5 — illeg.

Check Tpt line at opening — 1st version?

MF101:0368 —

Op. 12 in fair copy, but with some changes in notation

Webern, Op. 12

MF101: 0383 —

Complete sketches for all four songs [illeg. on microfilm]

see orig.

MF101: 0729

Sketchbook I

The five sketchbooks contain Op. 19 through 21,  
Webern's entire oeuvre from 1926-1945  
total of 422 pp. — most on 20-  
staff score paper

All illeg. on microfilm — see  
sound facsimile copies in the Stiftung

WEBER M F 103

~~MEYER: 103:0037?~~ in ~~apparently to date 1913~~  
orch. piece, "schon bewegtes Viertel"

0640-0041 sketch to 1913 orch. Piece No. IV: "schon bewegt Viertel"

Drei Orch. Lieder 1913-1914

Sketches

including "O sancte Glorie der Berge", which begins  
with op. 10

0087 -

Sketches - unidentified

---

0705 Two sketches (as Piano M 158 + 159  
1909?)

---

0708 ff. Eight orch. Fragments  
probably part of 1911/13 complete

(9 pp.)

- in partical format (pencil)

---

Webern material - Some other things to look at:

"Chord study" on p. 7 of Supplement

Technical Studies, Stecher for No. 1

Op. Arr. for Fl., Ob., Cl. Bass Drum, Triangle,

Tam-tam, Bells, Harmonium, Piano forte, Un. F&T, Va.

Check  
not completed

(A)

Es. Kl  $\flat$   $\frac{3}{4}$   $\frac{2}{4}$  3

Kl  $\frac{3}{4}$

Br  $\text{tr}$   $\text{trum}$  ②

Celesta

Oboe  $\text{pp}$

① Vcl  $\text{pp}$

Mandoline

Flageon Cell

Celesta  $\text{tr}$

Flute

③ Horn

Trumpets

⑤ Oboe  $\text{tr}$  Geige a Geige  
Trump  $\flat$  Trump  $\flat$  Geige  
Cis Horn  
E Trump

④ Geige Horn  $\sharp$  Horn

Br.  $\text{tr}$   $\text{trum}$  ③

③

Trumpets  
Horn  
C.B

B. Kl

mmwkl.

Trumpets

PART B horn - on sep. page

⑤ pavenis indicate deletion

on staff