

Schoenberg, Phantasy for Violin with Piano Accompaniment, Op.47 (1949)

Hexachord is 6-21

The i-combinatorial value of t is 5

	Bb	A	C#	B	F	G	E	C	Ab	Eb	F#	D
0	11	3	1	7	9	6	2	10	5	8	4	
1	0	4	2	8	10	7	3	11	6	9	5	
9	8	0	10	4	6	3	11	7	2	5	1	
11	10	2	0	6	8	5	1	9	4	7	3	
5	4	8	6	0	2	11	7	3	10	1	9	
3	2	6	4	10	0	9	5	1	8	11	7	
6	5	9	7	1	3	0	8	4	11	2	10	
10	9	1	11	5	7	4	0	8	3	6	2	
2	1	5	3	9	11	8	4	0	7	10	6	
7	6	10	8	2	4	1	9	5	0	3	11	
4	3	7	5	11	1	10	6	2	9	0	8	
8	7	11	9	3	5	2	10	6	1	4	0	

Combinatorial associations (secondary sets and aggregates):

P0	15	
P1	16	i.e., add 5 to subscript of P (mod 12)
P9	*	
P11	.	
P5	.	
P3		
P6		
P10		
P2		
P7		
P4		
P8		

Schoenberg, Phantasy

Subsets of the hexachords

P0 0 11 3 1 7 9 6 2 10 5 8 4

5-13: 11, 0, 1, 3, 7

5-26: 2, 5, 6, 8, 10

5-33: 7, 9, 11, 1, 3

5-28: 2, 4, 5, 8, 10

4-2: 11, 0, 1, 3

4-19: 10, 2, 5, 6

4-24: 11, 1, 3, 7 } *wholenotes*

4-27: 2, 5, 8, 10

4-25: 7, 9, 1, 3

4-215: 4, 5, 8, 10

3-3: 11, 0, 3

3-12: 10, 2, 6

3-6: 11, 1, 3

3-11: 10, 2, 5

3-8: 1, 3, 7

3-7: 5, 8, 10

3-8: 7, 9, 1

> T₆

3-3: 4, 5, 8 (*common with first hexachord*)

- 15 First hexachord has the pc content of the second hexachord of P0, but the subset structure of the first hexachord of P0. This, of course, is general for combinatorially-related row forms.

Subsets of the 12-note row: These appear to be insignificant, except for the trivial cases of 7-28 and 7-13, complements (literal) of the last and first pentads, respectively.

In the case of 8-note subsets, however, the second such (beginning with pc11) forms 8-19: (4, 5, 8, 0) and the third such (beginning with pc3) forms 8-19 again: (4, 8, 11, 0)

Schubert, Fantasy, Op. 47

Hexachord 6-21; i-combinatorial value is 5

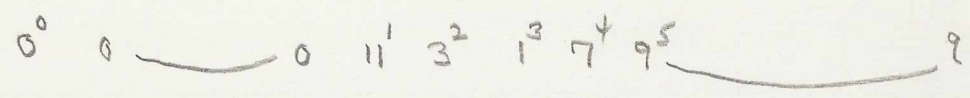
①

m. 1

m. 2

Violin

(P₀)

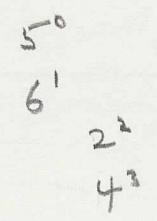


(I₅)

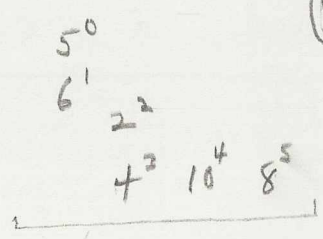


Piano

(I₅)

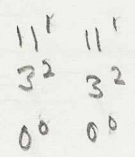


(P₀)

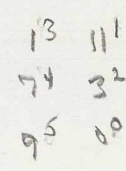
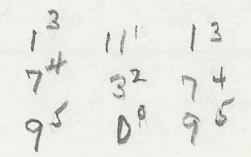


7-13: {2, 4, 5, 6, 8, 9, 10}

Completion of aggregation



(I₅)



Schoenberg, Phantasy

m. 3
↓

8⁵ 10⁴

m. 4

8⁵ 8 $\textcircled{R_6}$ 9⁶

or retrograde of
order nos. of preceding I₅ segment

m. 5
↓

9 9 9 7 1⁸ 1 7⁷ 8⁸ 1

1³ $\textcircled{I_5}$
7⁴
9⁵

6²
2¹
5⁰ 4³ 10⁴

6⁴ 2² 10⁴ $\textcircled{RI_5}$
5⁰ 4³

8⁶ 8⁶ 5¹¹ 8⁶ 8⁶
4⁸ 4⁸ 2⁹ 4⁸ 4⁸
10⁷ 10⁷ 6¹⁰ 10⁷ 10⁷

6¹⁰ 10⁷
2⁹ 4⁸
5¹¹ 8⁶

5¹¹ 10⁶
2⁹ 4⁸
6¹⁰ 8⁷

7-13: {2, 4, 5, 6, 8, 9, 10}

Completion
of
aggregate

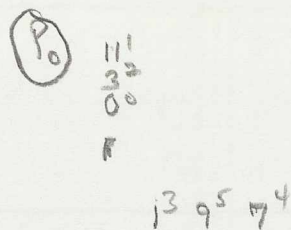
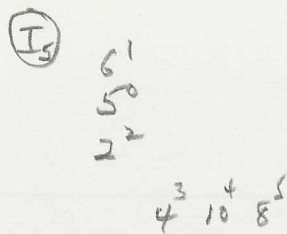
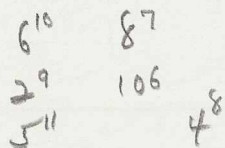
NB. second hexachord of R₆
combined with second
hexachord of R_{I₅}

Schoenberg, Phantasy

m. 6

m. 7

m. 8



dyad
reversed

here second hexachord
of RIs combines
with the first hexachord
of P_0

Schoenberg, Fantasy

Second hexachord of P₀ here for first time

Completion of ⁽⁴⁾ second hex. of P₀

m. 9

(P₀)

5¹¹ 6¹⁰ 5¹¹

0⁰ 11¹ 11¹ 11³ 9⁵

m. 10

6⁶ 2⁷ 2² 10⁸

m. 11

dyad reversed
8⁸ 7⁷ 5⁹
10²

8¹⁰ 4¹¹

(P₀)

11¹
3²
0⁰

7⁴ 1² 9⁵

dyad
reversed

~~11¹~~
~~3²~~
~~0⁰~~
3²
11¹
1²
0⁰

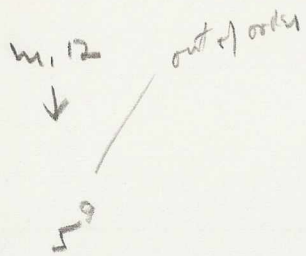
7⁸ 9⁷
3⁷ 3³
11⁶ 11¹¹

11¹¹ 0⁹
9¹⁰ 9¹⁰
0⁹ 1¹¹
11¹ 7⁸ — 7
9¹⁰ 3⁷ — 3
0⁹ 11⁶ — 11
11⁶

↑

Second hexachord of
I₅ here for first
time

Schoenberg, Phantasy



NB!
m. 12a or RIS
I₅

6⁶ 2⁹ 4³ 4 4 4 6¹
10⁸ 10⁸ 10 8 10 8 8 10 5⁰
22

11⁶

0 9 1 9
1 3 0 3
9 7 9 7
11 0 11 0

0
9
1
7
11
3

(P₀) 11¹ 7⁴
3² 1³
0⁰ 9⁵

11¹ 13³ I₅ 10⁴
3² 7⁴ 4³
0⁰ 9⁵ 8⁵



Note correspondence
of order numbers here

Piano here presents
unordered hexachord—
could be read as first
hexachord of P₀ or
second hexachord of I₅

m.14

m.15

m.16

(I₅) 11⁶

3⁷ 7⁸

I₅ 1¹¹ 8
9¹⁰ 4

8						8	5	10	2	6
4						4				
0	2				7	0				
0	6	8	0	2	11					
9					3	7	0			

P₀ 2⁷ 10⁸ 5⁹
6⁶

8 ¹⁰	5 ⁹
4 ¹¹	8 ¹⁰
5 ⁹	4 ¹¹
	2 ⁷
	6 ⁶
	10 ⁸

(P₀) 4¹¹
5⁹
8¹⁰

(I₅) 11⁶ 3⁷ 9⁸

0⁹
9¹⁰ →

11 3 7

↑
8ve doubling
(pc 9)

↑
8ve doubling
(pc 0)