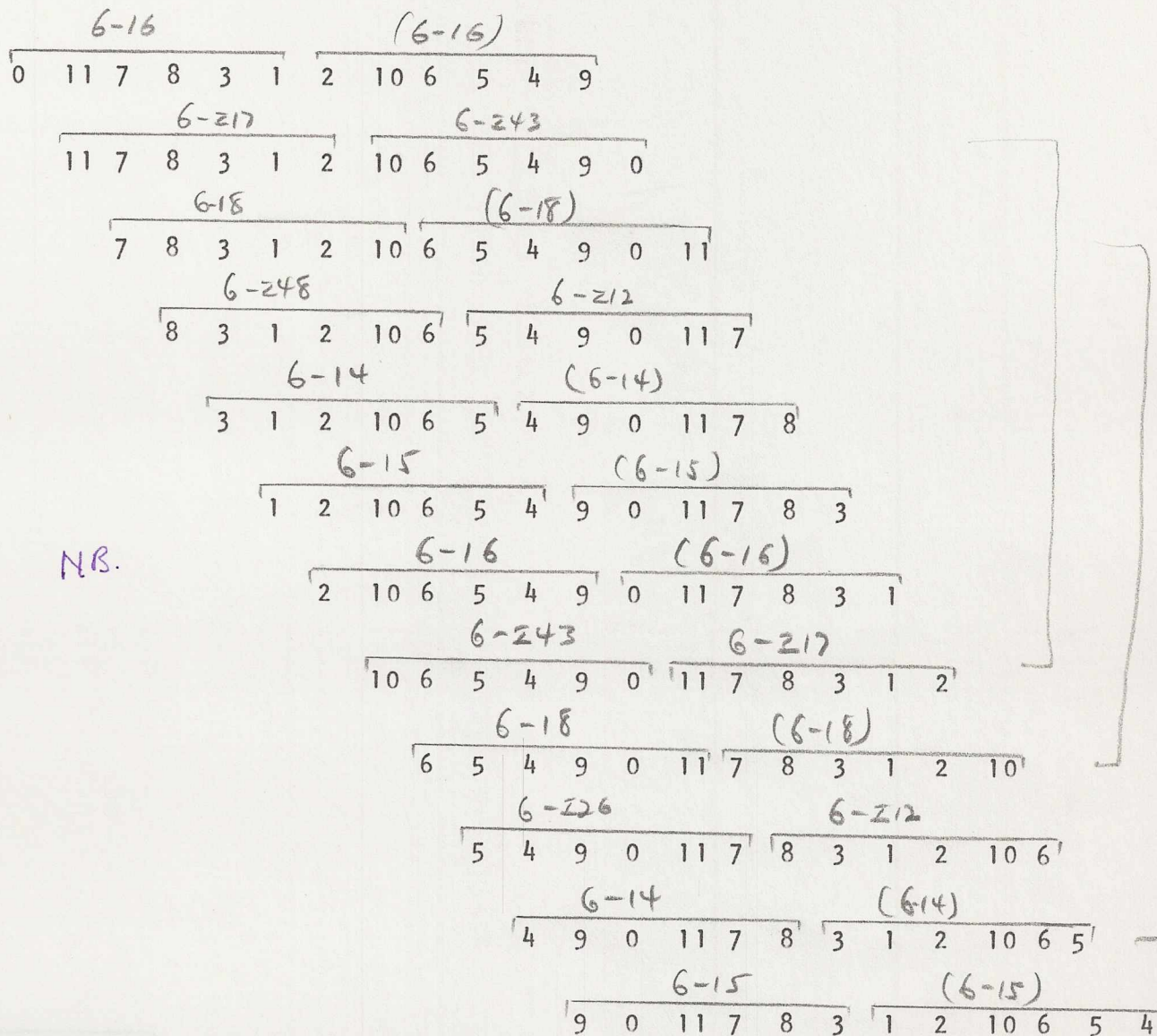


General:

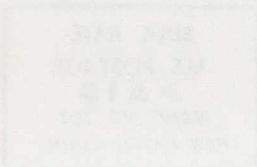
- 1) The overall progression and form are determined by combinatorially related row forms.
- 2) The foreground is structured in the atonal manner, with linear sets of the row replicated by formations consisting of non-contiguous elements of the row.

Subset Structure of the Row

Hexachords



N.B.



Schoenberg, Fourth Quartet (1936)
 First movement - Hauptstimmen at opening

Hexachord in 6-16 (I-comb. only)

Vn. I (m. 1)

Notes: b_0 $\#_0$ b_1 b_0 b_0 b_0 b_0 b_0 b_0 $\#_0$ b_0

Fingerings: 0 11 7 8 3 1 | 2 10 6 5 4 9

(5 6 10 9 2 4 if ordered inversion)

Vn. II (m. 6)

Notes: b_0 b_0 b_0 b_0 b_0 $\#_0$ b_0 b_0 $\#_0$ b_0 b_0

Fingerings: 5 6 10 9 2 4 | 3 7 11 0 1 8

$T(I(P_0), 5)$ combinatorial values of \pm employed

Vn. I (m. 9)

Notes: b_0 $\#_0$ b_0 b_0 b_0 b_0 b_0 b_0 b_0 $\#_0$ b_0

Fingerings: 9 4 5 6 10 2 | 1 3 8 7 11 0

Vc. (m. 17)

Notes: b_0 b_0 b_0 $\#_0$ b_0 b_0 $\#_0$ b_0 b_0 b_0

Fingerings: 5 6 10 9 2 4 | 3 7 11 0 1 8

Schoenberg, Fourth Quartet III

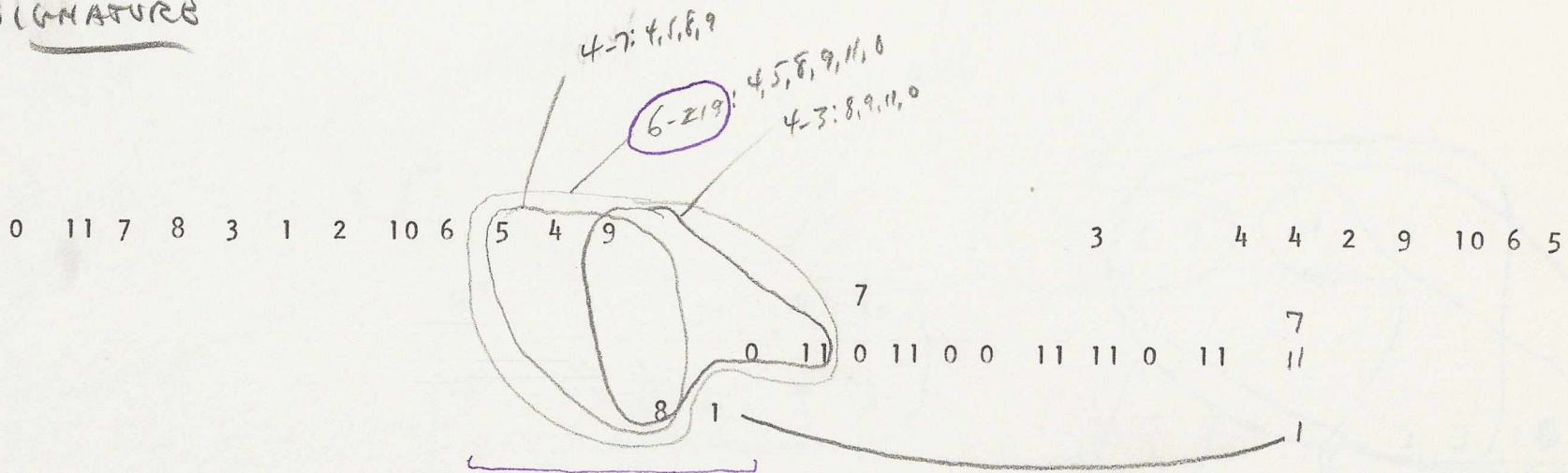
12-Tone Matrix

c=0

The hexachord is 1-combinatorial (only) for one value of t (5)

0	11	7	8	3	1	2	10	6	5	4	9
1	0	8	9	4	2	3	11	7	6	5	10
5	4	0	1	8	6	7	3	11	10	9	2
4	3	11	0	7	5	6	2	10	9	8	1
9	8	4	5	0	10	11	7	3	2	1	6
11	10	6	7	2	0	1	9	5	4	3	8
10	9	5	6	1	11	0	8	4	3	2	7
2	1	9	10	5	3	4	0	8	7	6	11
6	5	1	2	9	7	8	4	0	11	10	3
7	6	2	3	10	8	9	5	1	0	11	4
8	7	3	4	11	9	10	6	2	1	0	5
3	2	10	11	6	4	5	1	9	8	7	0

THE SIGNATURE



? 6-219: 2, 8, 11, 0, 2, 3 ? 6-244: 1, 4, 5, 8, 9, 10

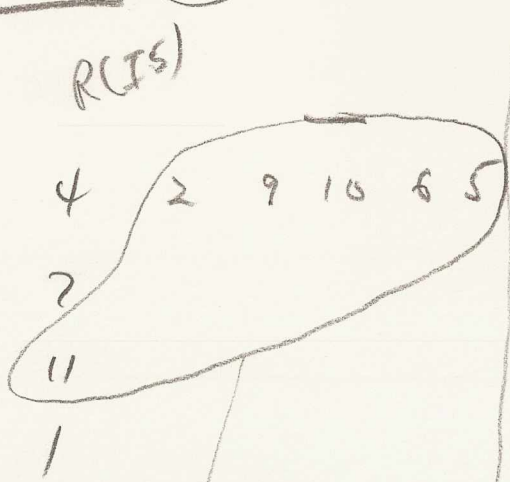
? 6-244: 4, 5, 6, 9, 10, 1

6-244: 9, 0, 1, 4, 5, 6 (omits pe8)

6-244: 11, 0, 1, 4, 5, 8

THE GREAT GARDEN
 1000
 1000
 1000
 1000

THE SIGNATURE (620)



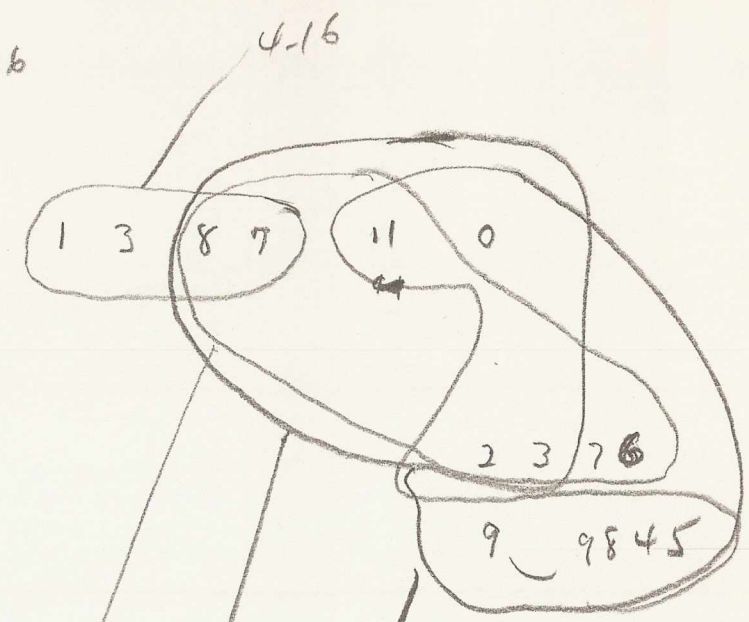
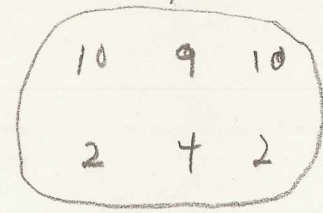
6-244: 2, 5, 6, 7, 10, 11

RCPO)

9

4

5 6



6-219: 4, 5, 8, 9, 11, 0

! 6-219: 7, 8, 11, 0, 2, 3

6-244: 11, 2, 3, 6, 7, 8

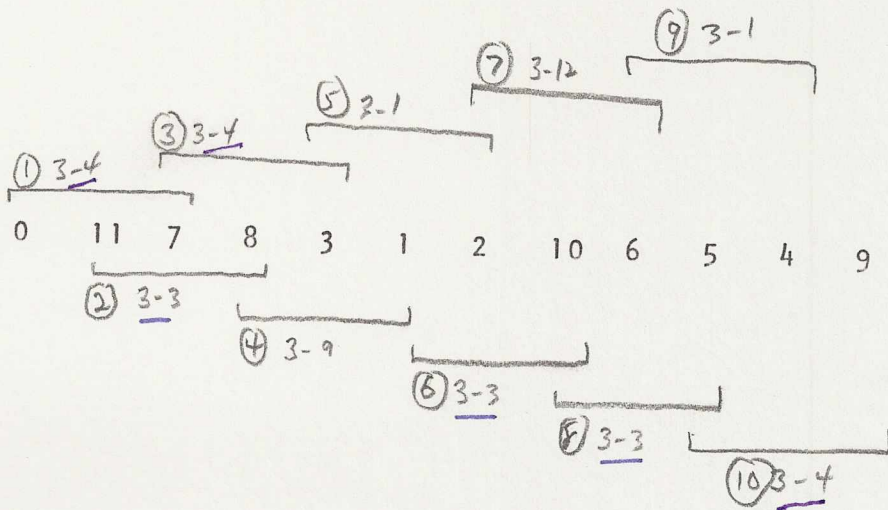
0 117 8 3 1 | 2 106 5 4 9
┌───┬───┬───┬───┬───┬───┬───┬───┬───┬───┐
1 4 1 5 2 1 4 4 1 1 5

no ic3 or 6

The third movement of the Fourth Quartet was completed June 18, 1936. No date is given for the beginning. Rufer says it appears to have been composed without interruption.

The entire quartet was commissioned by Elizabeth Sprague Coolidge.

Schoenberg, Fourth Quartet III
 Subset Structure of the Row: Trichords

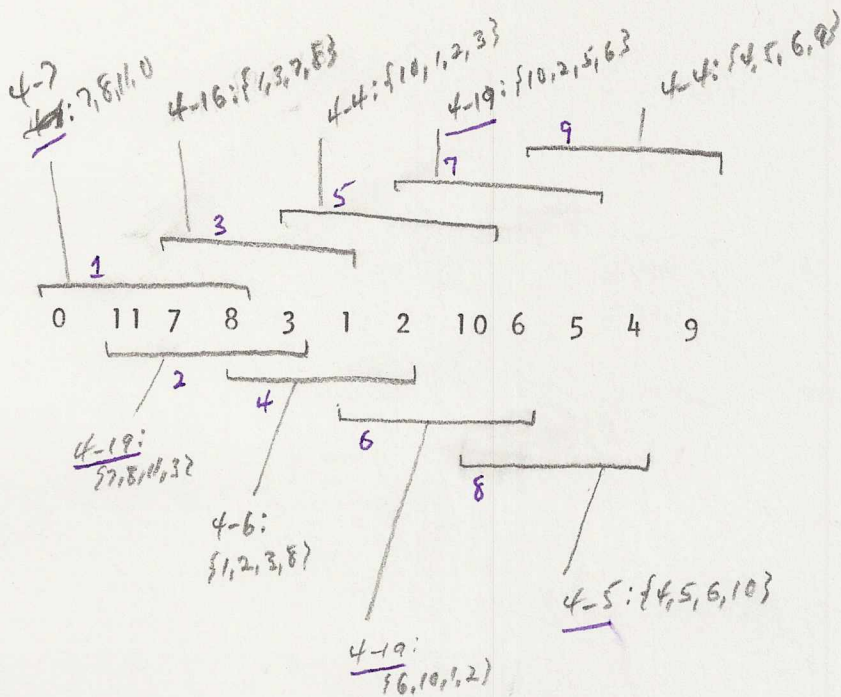


Disjunct trichords are: 1 4 7 10

3-4 3-9 3-12 3-4

Thus, 3-4 begins and ends each row statement (regardless of the form of the row).

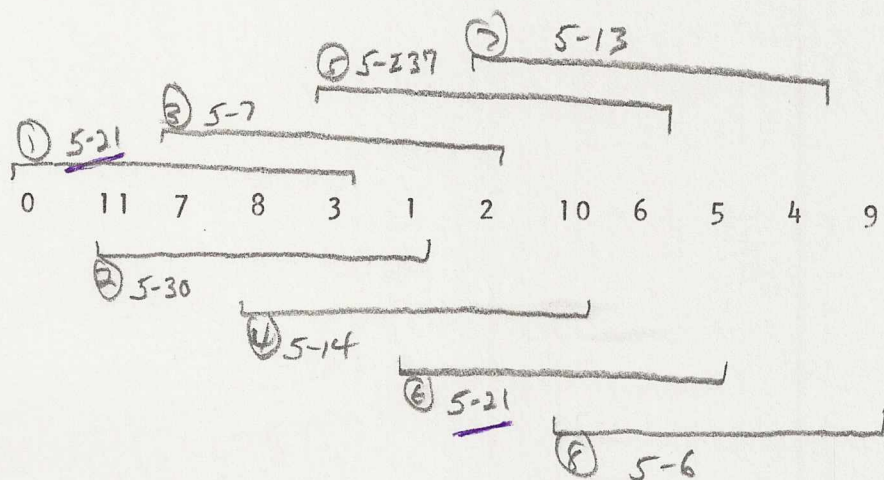
Schoenberg Fourth Quartet III
 Subset Structure (tetrachords)



Disjunct tetrachords are 1 5 9: 4-5/4-4/4-4.

There are three forms of 4-19: 2 6 7.

Schoenberg, Fourth Quartet III
 Subset Structure of the Row: Pentachords



Only 5-21 is repeated.

