

Handwritten musical score for measures 14-17. The score is in G major (one sharp) and 4/4 time. It features a melodic line in the treble clef and a bass line in the bass clef. Measure 14 is marked with a circled '14'. A bracket above measures 14-17 is labeled '6-prg.'. Measure 15 is marked with a circled '15'. Measure 16 is marked with a circled '16'. Measure 17 is marked with a circled '17'. The bass line includes chord symbols:  $\text{V}$ ,  $\text{VI}$ ,  $\text{VII}^{\flat}$ , and  $\text{V}$ . Fingering numbers (5, 6) and other annotations like  $\delta$  and  $\gamma$  are present. A circled '14' is also written in the bass line.

Handwritten musical score for measures 18-20. The score is in G major and 4/4 time. Measure 18 is marked with a circled '18'. Measure 19 is marked with a circled '19'. Measure 20 is marked with a circled '20'. The bass line includes chord symbols:  $\text{R}\alpha$  and  $\text{R}\alpha$ . A circled '18' is also written in the bass line.

Handwritten musical score for measures 21-23. The score is in G major and 4/4 time. Measure 21 is marked with a circled '21'. Measure 22 is marked with a circled '22'. Measure 23 is marked with a circled '23'. A bracket above measures 21-22 is labeled '4-prg.'. A bracket below measures 21-22 is labeled '5-prg. (α)'. The word 'Sterben' is written above measure 22. The word 'STER- ben' is written above measure 23. The bass line includes chord symbols:  $\text{VI}$  and  $\text{V}$ . A circled '21' is also written in the bass line. A circled '23' is also written in the bass line.

166

Pitch-class Sets in  
Schoenberg's Opus 19/IV

Name:Prime Form	Source
3-5: [016]	8-28
4-19: [0148]	7-21
4-23: [0257]	7-35
4-z29: [0137]	8-28
5-28: [02368]	8-28
5-33: [02468]	7-33
6-z23: [023568]	8-28

Source Sets

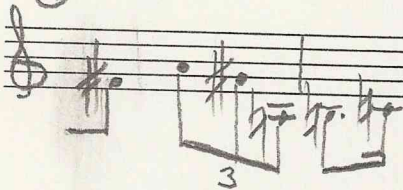
7-21: [0124589]
7-31: [0134679]
7-33: [01246810]
7-35: [01356810]
8-28: [013467910]

②



Schoenberg  
Op. 19/4

⑦



Ordered T ( $t=5$ ) of pc set 5-10  
contour also preserved

How compare rhythmic patterns?



A. Trichords ①

B. Tetrachords

(unique interval pattern)

C. Dyads

↑ ↑  
4-27: 4-27:  
{10,11,4,6} {6,8,11,23}  
∨  
IT<sub>0</sub>

also m. 10 c<sup>b</sup>-B<sup>b</sup>

\* as in m. 4, L.H.

Proportions\* preserved

m.3 structure due to Chapman

③

⑥

b<sub>2</sub> b<sub>3</sub> b<sub>1</sub>

2 3 1

Op. 19/4  
Notes on Rhythm

1. Durations:

