

Prélude IV

pour piano

OLIVIER MESSIAEN

Instants défunts

6-23 m+d 7 (Secundum)
Lent, ému, d'une sonorité douce et lointaine

1-3

ppp *expressif* *ppp*

4-9 *mf* *CI* *4-215 CI* *4-215 CII* *5-34: [5,9,9,11,2]* *= I (dominant) Mode 6 (8-25)* *→ 4-16: [2,4,5,9,11]* *(mod 4)*

4-6

ppp *ppp* *mf*

V (cm)

7-8

ppp *ppp* *mf* *pp*

8

4-215 CI (inversion 1 bar 8) **Modéré**

= bar 15 (bar 2)

10-11

4-215 CI: form 6-233 w/609 *6-27 CI*

3 *3*

12-13

8-14 CI all

= bar 9

J-28 CI

4-15 CI

mf

14-15

= bar 10

= bar 11

16-18

pp

19-21

Lent

ppp

expressif

mf

ppp

p

22-23

Modéré

ppp

p

Canon

8

5-28 CI

5-28 CI

24

CANON

5-28 CI

25-26

6-34
7-34

pp

bar II

3

3

5-34 bar 2

27-29

4-25 CII

pp

pp

p

pp

p

pp

pp

6-27 CII

30

CANON

p

5-28 CI

31-32

Retenu

Modéré

bar II

3

pp

33-34

35-37

Lent

pp *ppp* *expressif* *mf* *plus p*

Toujours lent

38-40

ppp *encore plus p*

41-43

p *ppp*

6-35 notes 2
Rall.

Rall. molto Très lent

44-46

4-229 CII 4-229 CI 4-229 CIII

o7dc

Prélude

pour piano

OLIVIER MESSIAEN

La colombe

mode 2
8-28 CI (all) — each line wings (douce etc)
Lent, expressif, d'une sonorité très enveloppée

1-2

ppp

p

ppp

"E major"

3-6

p

pp

expressif

pp

6-27 [8, 11, 12, 4, 5] CI

rnbato

6-33 (E-major hexachord)

4-23

7-9

cresc.

6-33 (G major hexachord)

4-3 (b.3)

CI: 6-249

6-250

4-17 4-27

(bar 1) (bar 2)

A tempo

10-12

Rall.

ppp

pp

p

ppp

7-34: 5-34 4-19

V⁹

6-21 (hepta)

(bar 3) (bar 4) (bar 5) (bar 6)

13-16

p

rubato

pp

expressif

pp

(bar 7) (bar 8)

17-19

cresc.

Variant on bar 9

B- 6-33

(bar 10)

20-23

Rall.

(F) 8

ppp

p

pp

pp

5-35: 4-23 6-26

V

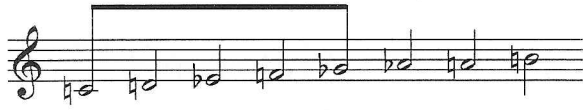
Rhythmic set of bar 6

"Evokes organ stop"

Prelude

pour piano

OLIVIER MESSIAEN



1-3

Lent

pp expressif

Musical notation for measures 1-3 of the prelude. The score is in 4/4 time and features a melodic line in the right hand and a bass line in the left hand. The tempo is marked 'Lent' and the dynamics are 'pp expressif'. A handwritten annotation 'I' (Ab7)' is present below the bass line.

4-7

Musical notation for measures 4-7 of the prelude. The score continues with the melodic and bass lines. A handwritten annotation 'I' (Ab7)' is present below the bass line.

8-11

Musical notation for measures 8-11 of the prelude. The score continues with the melodic and bass lines.

12-15

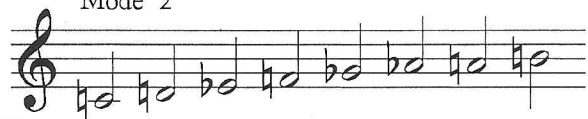
Musical notation for measures 12-15 of the prelude. The score continues with the melodic and bass lines. A handwritten annotation 'I' (Ab7)' is present below the bass line.

Prelude VII

pour piano

OLIVIER MESSIAEN

Mode 2



Plainte calme

1-3

Lent

pp expressif

mode 2 8-28 (CII)

pn

Mode 2 (all) 5-10 (CII)

completes 8-28

5-25

pn

(marquez le chant et la voix intérieure)

4-7

Bb completes 8-28

T2 6-30 "Coronation"

6-249

Mode 2 (CII)

3

6-30

"Ab7"

8-11

pn

12-15

Reversal + mordoring

Diatonic 4-22

Canon 4-22

p

"Eb major" (11-35)

6-30 "Coronation" (Interval)

Pressez

16-18

"D major" (7-35)

cresc.

Mode 3 (7-22) Mode 6 (5-30)

Rall.

Bar 15
A tempo

4-22

19-21

4-16 4-16

p

6-30 cII 5-31 cIII

Pressez

Rall.

Rall. molto

22-24

cresc.

f

8-28 cII (coll)

Bar 9
A tempo

25-28

pp expressif

29-32

dim.

pppp

MESSIAH
PRÉLUDE VII
PLAINTE CALME

Mode 2 3 E9 u pu

Handwritten musical notation for the first system, including treble and bass staves with notes and a fretboard diagram below.

mode 8

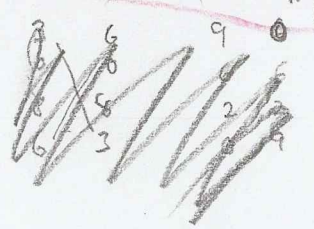
Handwritten musical notation for the second system, featuring a circled area with chord diagrams and notes.

Handwritten musical notation for the third system, including notes and a circled area with a red annotation.

Reordered to bring common notes into descent

Handwritten musical notation for the fourth system, including notes and a circled area.

6-218 (a, 105)



Bl Act I vers 2

