

Bm Partita: Bourrée

Handwritten musical notation for the first system of the Bourrée. The staff is in treble clef with a key signature of two sharps (F# and C#). Above the staff, there are circled measure numbers 3, 5, and 12. A note above the first measure is marked with a ^ and the letter C. A note above the second measure is marked with a ^ and the letter S. A green annotation reads "BVE prog.: f#2 - f#1 (m. 20)". Fingerings are indicated by numbers in parentheses: (5) and (6) under the first two notes. A slur covers measures 5 through 12. Above the slur, there are circled measure numbers 10, 10, 10, 10, and 10. A circled measure number 12 is at the end of the system. The bottom staff shows chordal accompaniment with notes 5 and 6 in parentheses under the first two notes.

Handwritten musical notation for the second system. The staff continues from the first system. Circled measure numbers 12, 16, and 20 are present. A green slur highlights a passage from measure 16 to 20. A circled measure number 20 is at the end of the system. The bottom staff shows chordal accompaniment with a circled measure number 20 and the Roman numeral III below it.

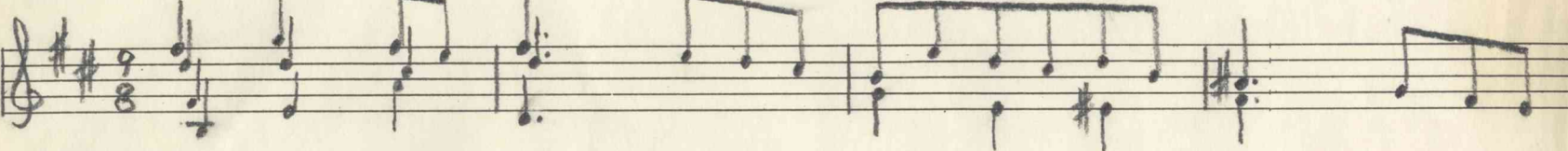
Handwritten musical notation for the third system. The staff continues from the second system. Circled measure numbers 21, 25, and 28 are present. The bottom staff shows chordal accompaniment with circled measure numbers 21, 25, and 28.

Handwritten musical notation for the fourth system. The staff continues from the third system. A circled measure number 34 is present. The bottom staff shows chordal accompaniment with a circled measure number 34.

Double



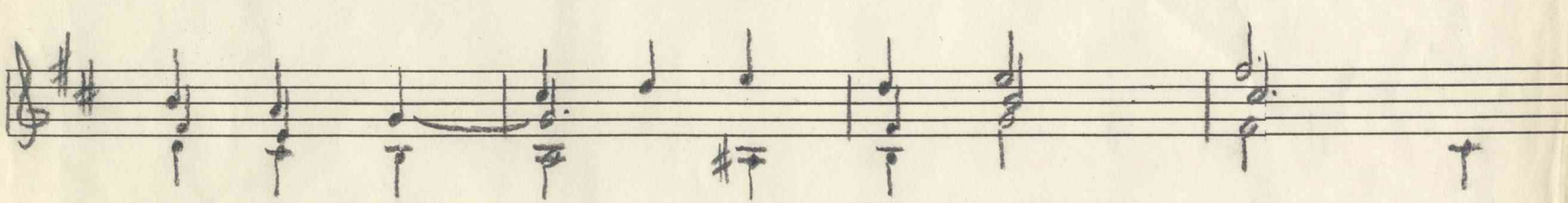
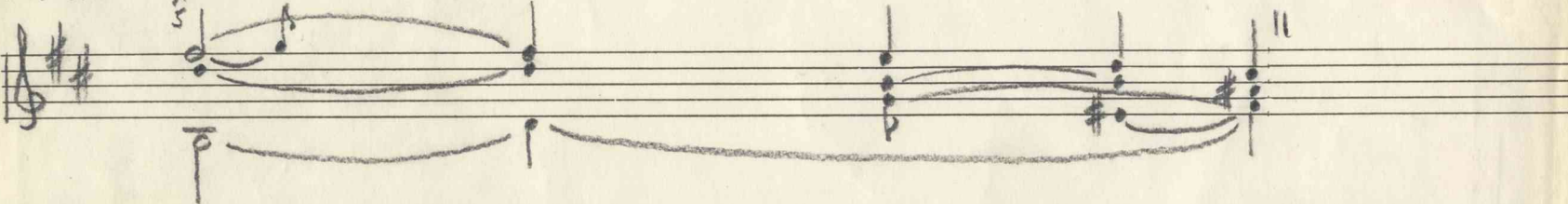
Sarabande



Reduction 1



Reduction 2



J.S. Bach, Partia 1^{ma} a Violino Solo senza Basso
Sarabande

A.F. (1970)

Handwritten musical notation for the first system of the Sarabande. The notation includes a treble clef, a key signature of one sharp (F#), and a 3/4 time signature. The notation includes a series of eighth and sixteenth notes with stems. Circled numbers 5, 9, 13, 17, 21, 25, and 29 are placed above the staff. A yellow rectangular sticker is partially visible at the top center of the page.

Handwritten musical notation for the second system, showing a treble clef, a key signature of one sharp, and a 3/4 time signature. It features a complex melodic line with many slurs and ties. Roman numerals (I, II, III, IV, V, VI, VII) are written below the staff to indicate fingerings. The word "Überleg." is written above the staff on the right side. A blue rectangular sticker is partially visible at the bottom center of the page.

Handwritten musical notation for the third system, showing a treble clef, a key signature of one sharp, and a 3/4 time signature. It features a complex melodic line with many slurs and ties. Roman numerals (III, (I), V) are written below the staff. A blue rectangular sticker is partially visible at the bottom center of the page.