

Handwritten musical score on aged paper, featuring multiple systems of staves. The notation includes treble and bass clefs, various note values, rests, and dynamic markings. The score is divided into measures, with some measures containing circled numbers (e.g., 3, 14, 19, 21, 25, 27, 31, 35) and others containing circled text (e.g., 3+3, O.V.P.). The notation is dense and includes many accidentals and slurs. There are several yellowed or stained areas on the page, particularly in the middle and lower sections. The overall appearance is that of a working draft or a composer's sketch.

3+3

3  
2

14

19

21

25

(O.V.P.)

27

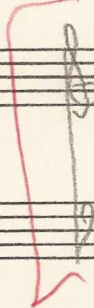
31

35

overlap

disc-64

10 8 (3) 10 8 (3) 10 8



29

(II)

IV

I

29

34

37

(IV)

IV

IV

I

~~7. 1. 1. 1. 3. 1~~

Handwritten musical notation on two staves. The top staff contains a complex melodic line with various notes, rests, and slurs. The bottom staff contains a bass line with notes and rests. There are some handwritten annotations like "overstep" and "6".

Handwritten musical notation on two staves, showing a short melodic phrase in the top staff and a corresponding bass line in the bottom staff.

Lento.

13.

1-3

4-6

7-10

11-13

14-17

18-20

*Più lento.*

*cf. m. 6*

21-23

*p sosten.*

24-26

**Tempo I.**

27-29

30-32

33-35

36-38

Autograph of Chopin Prelude Op. 28/8 13 (F#)

discrepancies compared to published version

meter signature is 3/2! (not 6/4)

slurs are not same as in published edition -- which?

*pedal marks*

*Tempo?*

Handwritten musical notation on two staves. The top staff is in treble clef and the bottom staff is in bass clef. Both staves have a key signature of one sharp (F#). The notation includes various notes, rests, and accidentals. There are some corrections and scribbles throughout the piece. In the upper right area of the second staff, there is a handwritten annotation:  $\frac{4}{3} \ 7 \ 6$ .

Handwritten musical notation on two empty staves. The top staff is in treble clef and the bottom staff is in bass clef. Both staves have a key signature of one sharp (F#). The notation is minimal, consisting of a few notes and rests at the beginning of each staff.

Chopin - F# Prelude, n. 5-9

Relation of prolongational lines to neighbor-note motives

Handwritten musical notation for the first system of Chopin's F# Prelude, n. 5-9. The notation includes a treble clef staff and a bass clef staff. The treble staff features a slur over a sequence of notes with fingerings 4, 3, 8, 7. The bass staff features a slur over a sequence of notes with a sharp sign. There are also some '+' signs and a 'OK' written below the bass staff.

Handwritten musical notation for the second system of Chopin's F# Prelude, n. 5-9. The notation includes a treble clef staff and a bass clef staff. The treble staff features a slur over a sequence of notes with the annotation "neighbor" above it. The bass staff features a slur over a sequence of notes with the annotation "i.e., F# subord. to E# within context" below it. There are also some '+' signs and a "superposition of inner voice" written above the treble staff.



Bach, Sarabande, D-minor French Suite

① Class exercise

②

5

7 6

①

③

(foreground)

melodic emphasis on 'A' line

The image shows a handwritten musical score on 12 staves. The notation is in dark ink on aged, yellowish paper. The score is organized into systems of two staves each (treble and bass clefs). The first system (staves 1-2) contains a few notes with slurs. The second system (staves 3-4) has some notes and rests. The third system (staves 5-6) is more complex, featuring a treble staff with notes and slurs, and a bass staff with notes and rests. Above the treble staff in this system are the numbers '10 7 10 10 7 10'. To the right of this system are two boxed numbers, '26' and '27'. The fourth system (staves 7-8) shows a treble staff with a large, sweeping slur and a bass staff with notes. The fifth system (staves 9-10) continues with similar notation. The sixth system (staves 11-12) has a treble staff with notes and a bass staff with notes and rests.