

Brahms: Op. 76/7

①

②

Brahms: Op. 76/7

Brahms: Op. 76/7

1st reduction

2nd reduction

11/13/62 - note use of: as predominant spell with emphasis on G as 5th of C (cf. Schubert Wasserfluten)

Notes on composing-out of theme in Brahms Op.76/7

Handwritten musical notation for the first system, measures 1-4. The treble clef staff contains a melodic line with notes G4, A4, B4, C5. A bracket labeled 'A' spans G4-A4, 'B' spans A4-B4, and 'C' spans B4-C5. The bass clef staff contains a bass line with notes G3, F3, E3, D3. A red bracket labeled 'D' spans the bass line from G3 to D3.

Handwritten musical notation for the second system, measures 5-6. The treble clef staff contains notes G4, A4, B4. The bass clef staff contains notes G3, F3, E3.

Handwritten musical notation for the third system, measures 7-8. The treble clef staff contains notes G4, A4, B4. The bass clef staff contains notes G3, F3, E3.

Handwritten musical notation for the fourth system, measures 9-12. A box with the number '8' is in the top left. The treble clef staff contains notes G4, A4, B4, C5. A bracket labeled 'A' spans G4-A4, 'B' spans A4-B4, and 'C' spans B4-C5. The bass clef staff contains notes G3, F3, E3, D3. A red bracket labeled 'A' spans the bass line from G3 to D3. A red bracket labeled 'B' spans the treble line from B4 to C5. A circled 'C' is above the final note C5. The text 'cf. bars 2-3' is written below the bass line.

Handwritten musical notation for the fifth system, measures 13-16. A box with the number '26' is in the top left. The treble clef staff contains notes G4, A4, B4, C5. A bracket labeled 'A' spans G4-A4. The bass clef staff contains notes G3, F3, E3, D3. The text 'variation D!' is written above the treble staff with arrows pointing to the notes. The numbers '5 6 5' are written below the first three notes of the bass line, and '6' is written below the fourth note.

Brahms, Op. 16/7

16b

(ins. opt. here)

(24)

Handwritten musical notation for the first system. The treble clef staff contains a series of notes with various accidentals (sharps, naturals, flats) and rests. Below the treble staff, there are handwritten numbers: (6 6 6 6 3 3 3 3). A large 'X' is drawn over the treble staff in the middle. The bass clef staff contains notes with accidentals and rests. Below the bass staff, there are handwritten numbers: II, III, IV, I.

Handwritten musical notation for the second system. The treble clef staff contains notes with accidentals and rests. The bass clef staff contains notes with accidentals and rests.

Handwritten musical notation for the third system. The treble clef staff contains notes with accidentals and rests. Above the treble staff, there are circled numbers: 8, 12, 15. The bass clef staff contains notes with accidentals and rests. Below the bass staff, there is a circled number: 15 III.

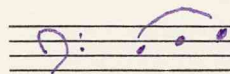
Handwritten musical notation for the fourth system. The treble clef staff contains notes with accidentals and rests. Above the treble staff, there is a circled number: 15. The bass clef staff contains notes with accidentals and rests. Below the bass staff, there is a circled number: 15.

Brahms, A-minor Intermezzo, Op. 76/17

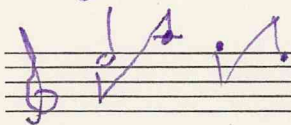
Class Errors

m. 3

E is not a bass note



m. 1



suggests



i.e., that b is still effective

also 4% A to E is rendered invisible

Go over mm. 33-34 (1st ending)

8vs line beginning in m. 4?

Brahms, Intermezzo, Op. 76/7, contd.

Handwritten musical score for Brahms' Intermezzo, Op. 76/7, continuing from the previous page. The score is written on four systems of staves, each with a treble and bass clef. The music is in 3/4 time and features a key signature of one sharp (F#).

Key annotations and markings include:

- Measure 26:** Circled number 26.
- Measure 29:** Circled number 29. Above the staff: *Übers!* (written above the treble staff). Below the staff: *prepass final D#-E (m. 31)*.
- Measure 33:** Circled number 33. Below the staff: *NB.*
- Measure 34:** First ending bracket labeled *I.* with sub-measures *34a*, *34b*, and *34c*. A note in measure 34c is marked *6 (cons)* with a *4* below it. Above the staff: *bass of m. 13-15!* with a line pointing to the bass line.
- Measure 35:** Circled number 35. Above the staff: *registri d.m. 2*.
- Measure 36:** *assog.* (ritardando) marking above the staff.
- Measure 37:** *I* marking below the staff.
- Measure 38:** *Übers!* marking above the treble staff.
- Measure 39:** *34a* marking above the treble staff.

The score includes various musical notations such as slurs, ties, and dynamic markings. The bottom two systems of staves contain some crossed-out or partially written musical notation.