

Exercise 2 (Brahms)

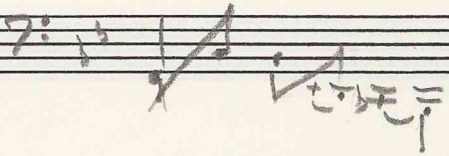
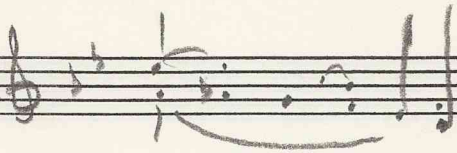
20 D/2

(21) (22) (23) (25) (27) (29) (30) (31)
(5-prg.: eb²-a')

ib/o
ovl:lop

(5-prg.: eb²-a')

w/overlap



Handwritten musical notation on a grand staff, heavily crossed out with a large diagonal line. The notation includes notes, rests, and accidentals. Boxed measure numbers 26, 29, and 32 are visible at the top. Below the staff, the notes Gb, Ab, F, and G are written.

Overall

Handwritten musical notation on a grand staff, showing a melodic line in the upper voice and a bass line in the lower voice. The notation includes notes, rests, and accidentals.

Final section

[32]

[37]

E♭?

[41]

(43)

(44)

(45)

Handwritten musical notation on a grand staff, showing a melodic line in the upper voice and a bass line in the lower voice. The notation includes notes, rests, and accidentals.

[49]

Handwritten musical notation on a grand staff, showing a melodic line in the upper voice and a bass line in the lower voice. The notation includes notes, rests, and accidentals.

unfolding tritone

139

3

139

$\begin{matrix} \text{ab} & \text{cb} \\ \text{db} & \text{cb} \\ 6 & 6 \end{matrix}$
] motive in right hand part

5-pcs. $\text{cb}^{\flat} \text{a}^{\flat}$ 27 31

Composing-out of cb^{\flat}

supports linear progression

with overlapping

31

Handwritten musical score for the first system, measures 5 to 31. The score is written on two staves (treble and bass clef). Measure numbers 5, 7, 11, 14 (with a circled 3 below it), 17, 20, 27, and 31 are indicated above the staff. Annotations include "not pm" with a blue arrow pointing to a note in measure 5, "cons." above measure 5, and "motive (chromatic) no. 13, interval of m. 1" with arrows pointing to notes in measures 27 and 28. Chord symbols "N6?" and "-VI" are written below the bass staff. A bracketed section from measure 20 to 31 is labeled "See detailed sketch of middle section" in blue ink. The notation includes various note values, accidentals, and slurs.

Two empty musical staves, one in treble clef and one in bass clef, positioned below the first system.

Handwritten musical score for the second system, measures 32 to 49. The score is written on two staves (treble and bass clef). Measure numbers 32 (with "[32-39: 1-7]" below it), 39, 45, and 49 are indicated above the staff. The notation includes various note values, accidentals, and slurs. At the bottom of the page, there are four vertical lines with red and black markings, possibly indicating fingerings or performance instructions.